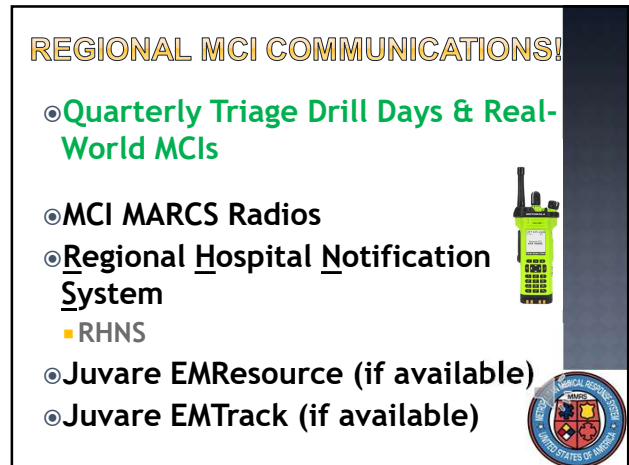
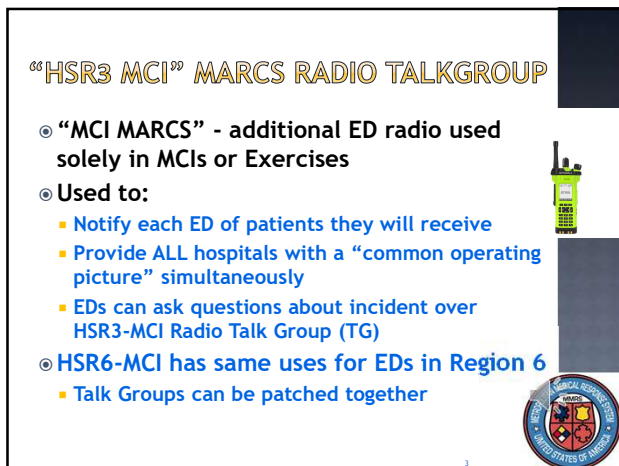




1



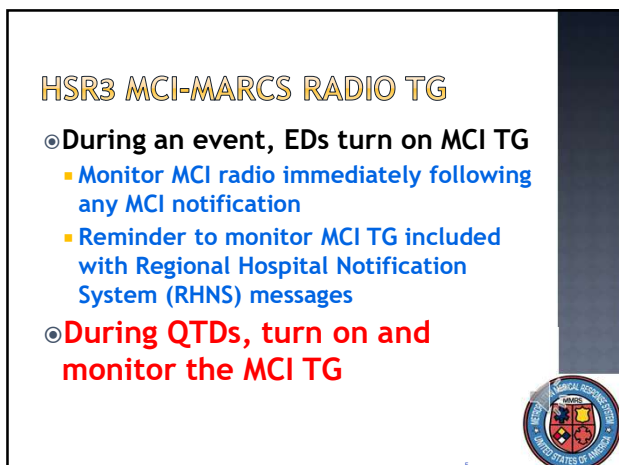
2



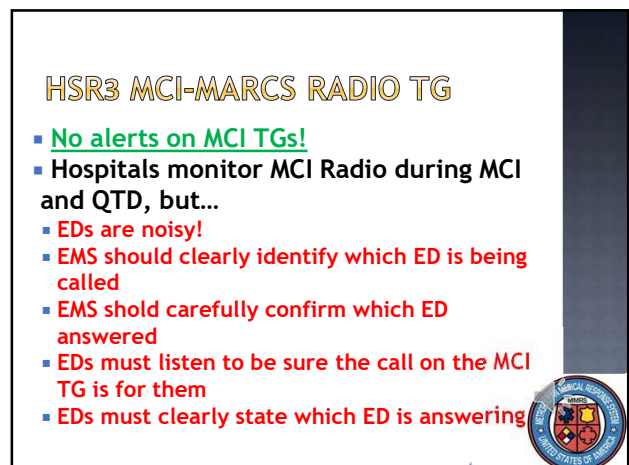
3



4



5



6

## MCI-STYLE REPORTS ON QTDS

- During QTDS, expect BRIEF, MCI-style reports from EMS on the MCI Talk Group
- Expect reports for every EMS patient during ENTIRE 24 HOURS of QTD (2000 hours - 2000 hours).
- During an actual MCI, individual EMS Units DO NOT "CALL-IN" to ED with REPORT!
  - ONLY the TRANSPORT Officer/Aide makes those calls
  - MCI-style reports during QTDS are an opportunity for EMS to practice
- MCI Reports are DIFFERENT!
  - Cannot be the typical radio/phone report!
  - Expect EMS to be short, sweet, and to the point!
  - No vital signs, no EKG findings, no medical hx
  - Example: "Wayne Hospital, this is Greenville Medic 591 enroute with one Yellow, possible fractured ankle."



7

## REGIONAL HOSPITAL NOTIFICATION SYSTEM (RHNS)

- One number for EMS, hospitals, and EMAs to call:
  - 937-333-USAR (8727)
- Rapid, simultaneous notifications during MCI or other major emergency
- Use whenever incident could involve a significant number of region's hospitals
  - Also used to indicate no need for action
- Montgomery County RDC puts out computerized message for region



8

## MCI JOB AID FOR RHNS

- Sent to all agencies, hospitals, and EDs in region
- Multiple locations in each ED should have a copy of the job aid
  - Including in the "Transport Officer Clipboard" issued to every ED
- Job Aid provides personnel with everything needed to activate RHNS
- Download from GDAHA or Dayton MMRS website



9

### Regional Hospital Notification System (RHNS) GDAHA/GMVEMSC/MMRS Mass Casualty Incident (MCI)/Emergency Communications Job Aid (RHNS sends messages to hospitals and Regional Coordinators in West Central Ohio)

ACTION:	PERFORMED BY:
1. To Receive or Activate (RHNS):	First agency or facility aware of MCI or Emergency Situation
• Call 937-333-8727 (333-USAR)	
• Ask to speak with RDC Supervisor	
• Request activation of Regional Hospital Notification System: <b>use the phrase, "MASS CASUALTY PAGE."</b>	
HOSPITALS:	
• Provide the following information:	
A. Name of agency	
B. There is an MCI/Emergency situation reported at _____ (location) as a result of _____ (cause: bus crash, tornado, haz-mat spill, etc.)	
C. General statement on severity, e.g., rough number of victims and other information	
D. Include these statements:	
• "Hospitals: update EMResource Triage Capacity"	
• Monitor HSR's MCI-MARCS talkgroup	
2. Activate ED's MCI Radio and have it monitored continuously (No alert tones on MCI Talk Group)	Hospitals
• MCI Talk Group is used by ALL EDs - you <b>MUST LISTEN</b> carefully for your ED to be called	Hospitals
3. EMS Transport Officer or aide will use MCI Talk Group to communicate all information to hospitals	EMS
• MCI Talk Group is used by ALL EDs. EMS <b>MUST</b> clearly announce what facility you are calling, and may need to announce ED name repeatedly	EMS
4. Update Juvenile EMResource Triage Capacity	Hospitals
5. Prepare to receive patients; make appropriate notifications within your agency; consider Code Yellow	Hospitals
6. Log on to Juvenile EMTrack and find or create the Incident (may call OFCA-ERS at 1-888-822-4900 for incident creation)	Availability of ERS TBD
7. On resolution of incident, send an update via RHNS	Hospital or EMS

Version 5.0 10/20/2019

1

March 21, 2024



10

- EMS and Dispatch Centers can monitor Juvenile EMResource during an MCI to see your capacity by triage categories
- Update every 8 hours during QTD & often in an MCI!

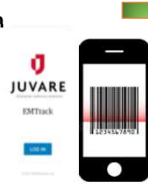
Hospital	Category	Capacity	Current	Available	Comments
Wayne Hospital	Level 1 Triage	10	0	10	
Wayne Hospital	Level 2 Triage	10	0	10	
Wayne Hospital	Level 3 Triage	10	0	10	
Wayne Hospital	Level 4 Triage	10	0	10	
Wayne Hospital	Level 5 Triage	10	0	10	
Wayne Hospital	Level 6 Triage	10	0	10	
Wayne Hospital	Level 7 Triage	10	0	10	
Wayne Hospital	Level 8 Triage	10	0	10	
Wayne Hospital	Level 9 Triage	10	0	10	
Wayne Hospital	Level 10 Triage	10	0	10	

11

## EMTRACK ENTRY

- At a minimum, every patient with a Tag (from EMS or ED personnel) should be entered in Juvenile EMTrack
- Tag Barcodes may be scanned using workstations, cell phones with EMTrack app, etc.
  - Use Barcode NOT QR Code
- Tag Number below barcode can be hand entered
- Hospitals can use other numbers (e.g., MRN)

Scan this:



Not that:



12